

_____ () _____

About the Report

•

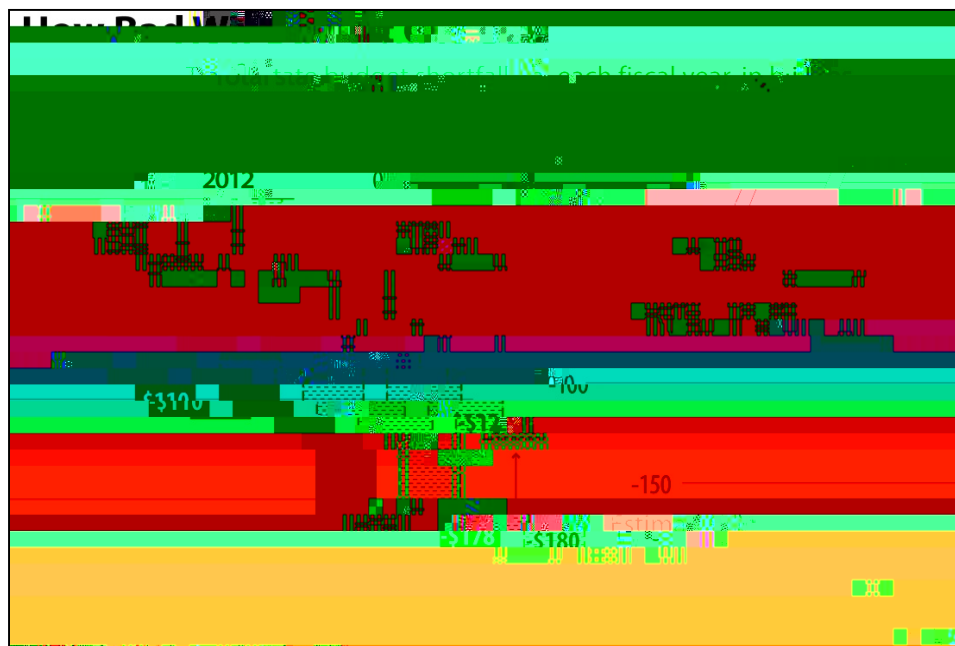
•

•

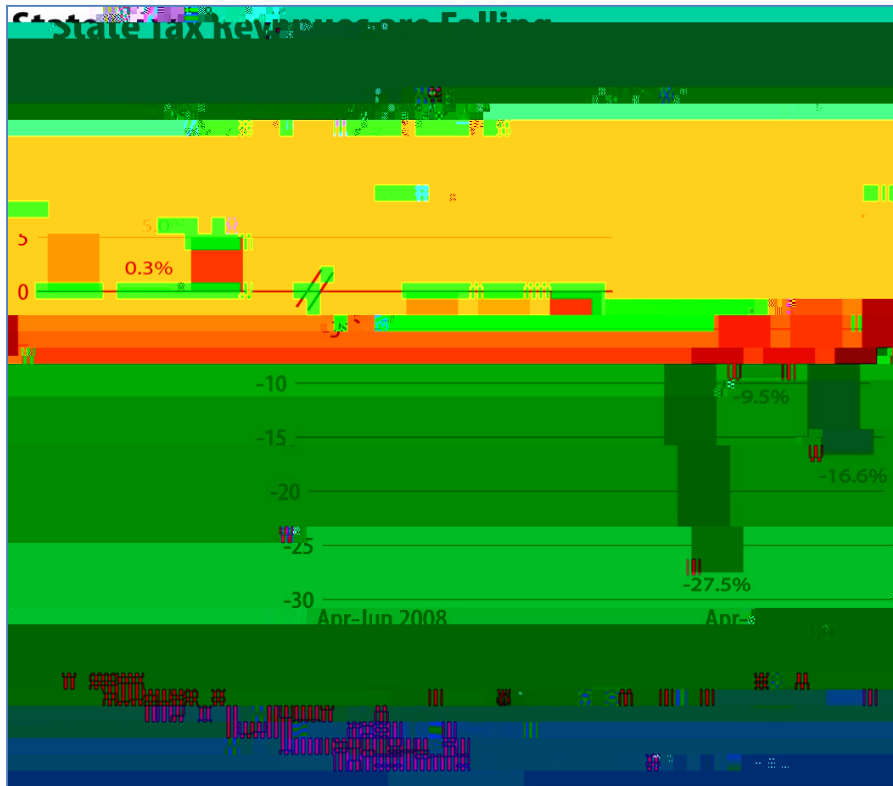
_____ () _____



(CBPP 2009) <http://www.cbpp.org/cms/index.cfm?fa=view&id=1214>



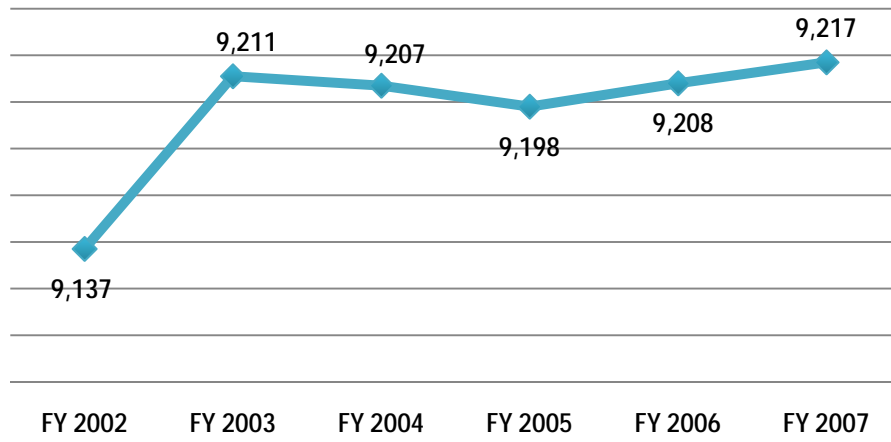
(CBPP 2009) <http://www.cbpp.org/cms/?fa=view&id=711>



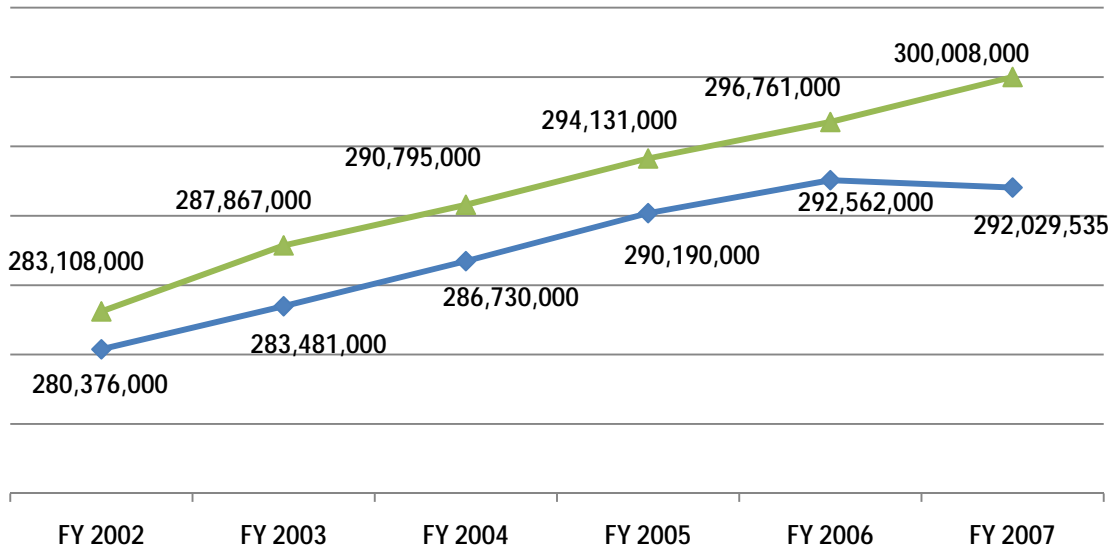
(CBPP 2009)

Public Libraries

Number of Public Libraries, FY2002 2007

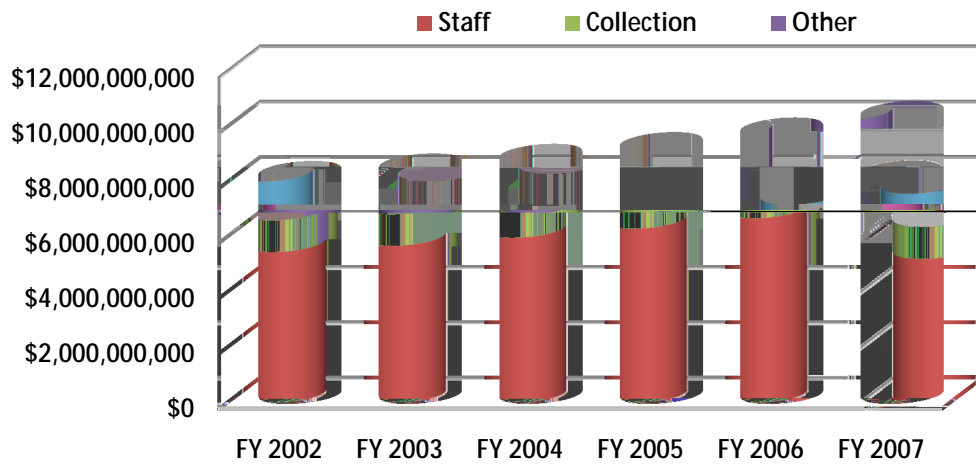


Number



_____ () _____

Public Library Operating Expenditures Distribution by Category, FY2002 2007



Overall Public Library System Operating Budget Stability, Fiscal Years 2008 and 2009		
Operating Budget	Fiscal Year 2008	Fiscal Year 2009
Increased more than 6%	12.50%	9.40%
Increased 4.1-6%	8.70%	8.60%
Increased 2.1-4%	22.50%	20.10%
Increased up to 2%	23.80%	21.80%
Decreased up to 2%	3.60%	4.50%
Decreased 2.1-4%	2.20%	3.90%
Decreased 4.1-6%	1.40%	2.20%
Decreased more than 6%	2.40%	3.70%
Stayed the same	22.90%	25.90%

Libraries Connect Communities 3 (2009)

The fo staffing. /

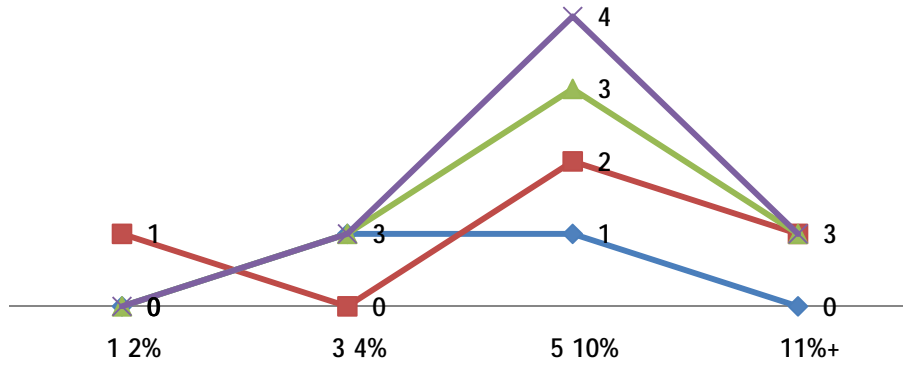
— () —

Figure C41: FY2009 Public Library Systems Average Total Operating Expenditures, by Type and Funding Source

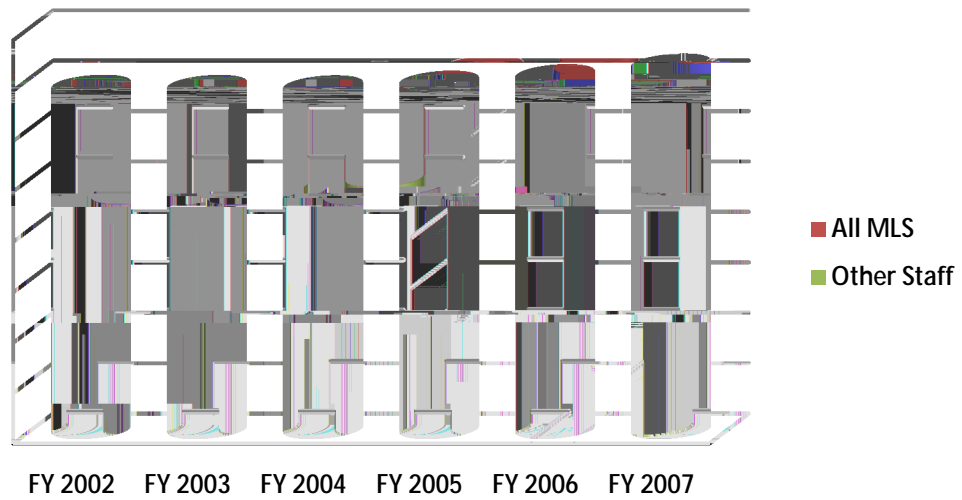
Sources of Funding	FY2009		
	Salaries (including benefits)	Collections	Other Expenditures
Local/county	\$1,017,687 (n=6,342)	\$205,012 (n=5,260)	\$383,614 (n=4,953)
State (including state aid to public libraries, or state-supported tax programs)	\$131,707 (n=1,316)	\$58,551 (n=2,161)	\$59,674 (n=1,572)
Federal	\$14,926 (n=192)	\$8,142 (n=322)	\$24,088 (n=679)
Fees/fines	\$29,059 (n=514)	\$20,277 (n=1,385)	\$37,922 (n=1,211)
Donations/local fundraising	\$196,880 (n=596)	\$32,923 (n=2,035)	\$72,264 (n=1,734)
Government grants (local, state or national level)	\$67,370 (n=412)	\$12,810 (n=836)	\$28,425 (n=998)
Private foundation grants (e.g., Carnegie, Ford, Gates, etc.)	\$363,068 (n=317)	\$42,610 (n=648)	\$35,582 (n=1,613)
Reported average total	\$1,805,771	\$380,325	\$641,569
Reported average percent	63.9%	13.5%	22.7%

Decreases in Local Funding FY 2010

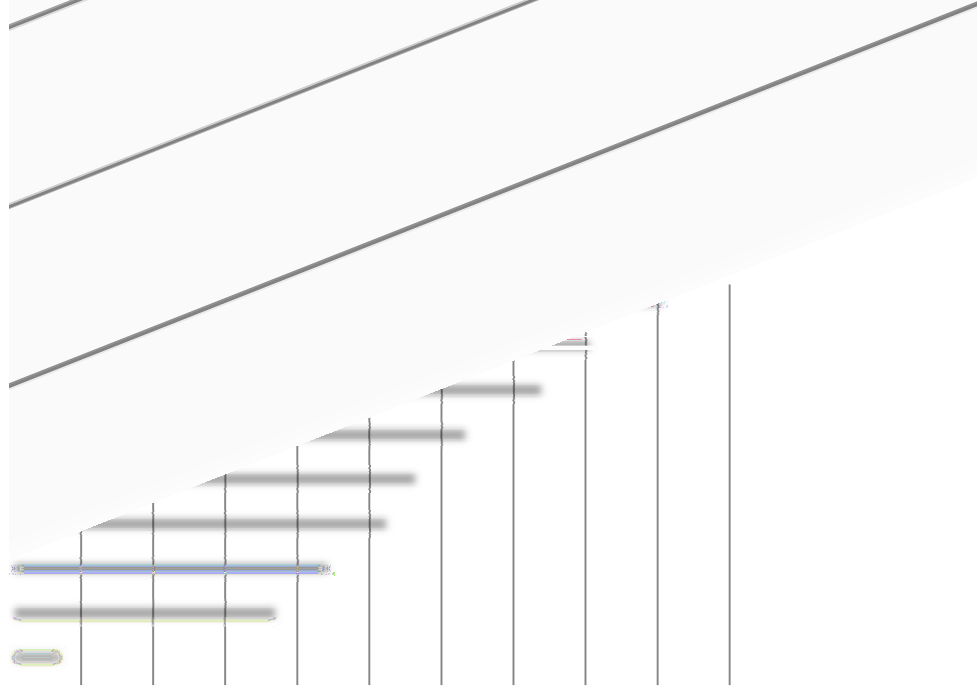
◆ Midwest ■ Northeast ▲ South ✕ West



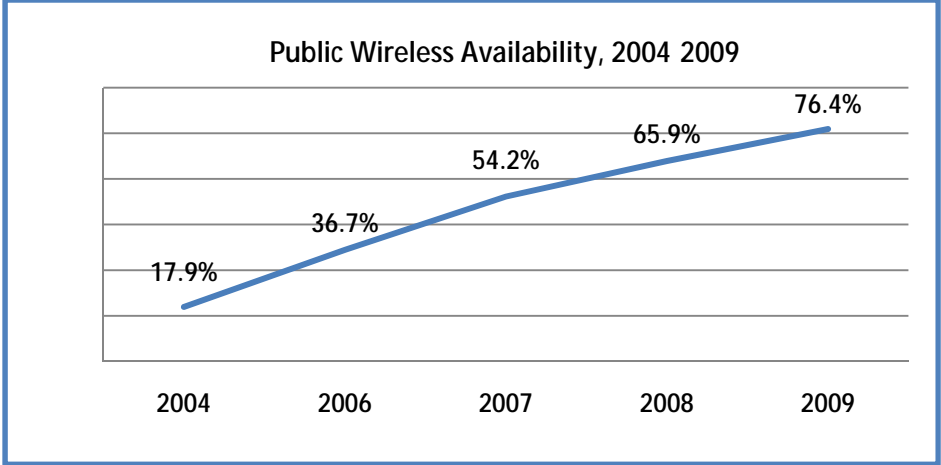
Number of Public Library Employees, FY2002 2007



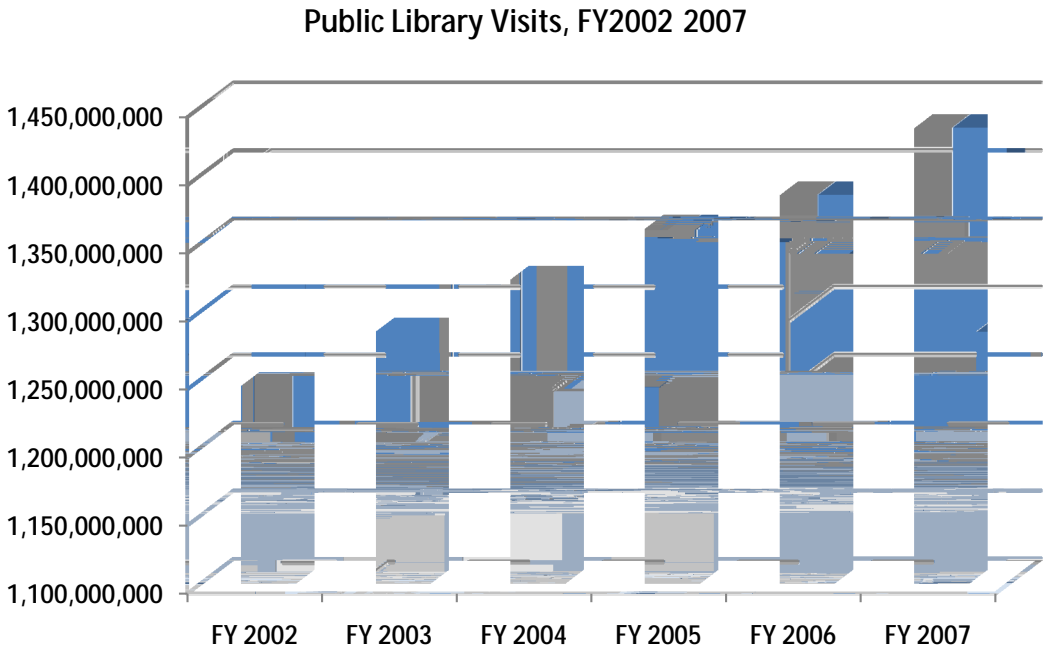
{ }



, Figure A2 (p.5) http://www.ala.org/ala/research/initiatives/plftas/2008_2009/index.cfm



, Figure A1 (p.4) http://www.ala.org/ala/research/initiatives/plftas/2008_2009/index.cfm



_____ () _____