



Digging into Local and Family History with Census Data

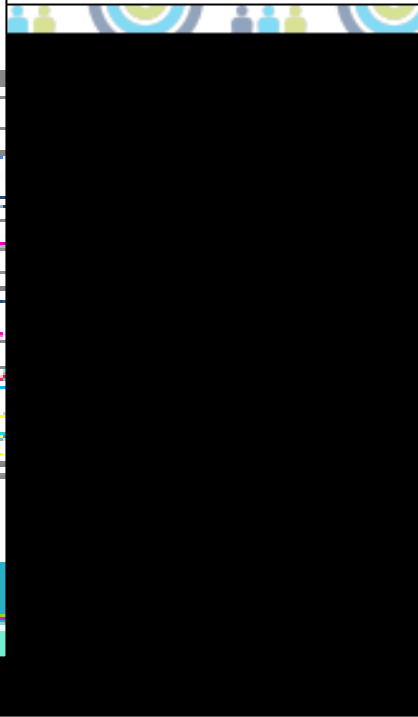
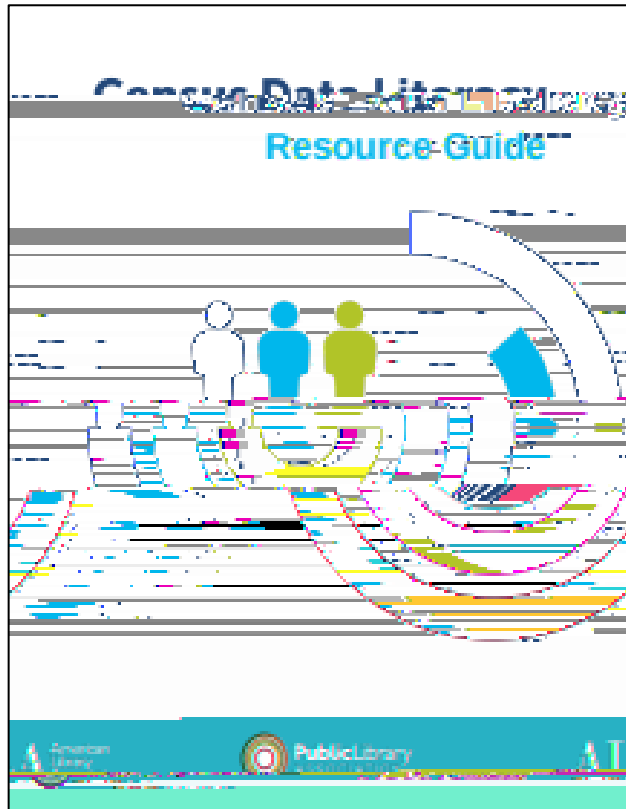
November 1, 2021





A T A American Library





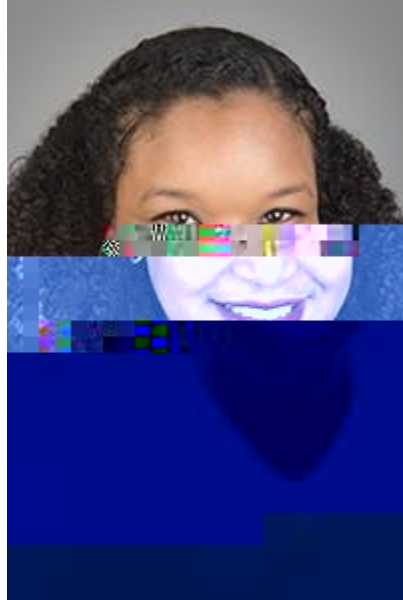
Using the Census for Family and Local History:





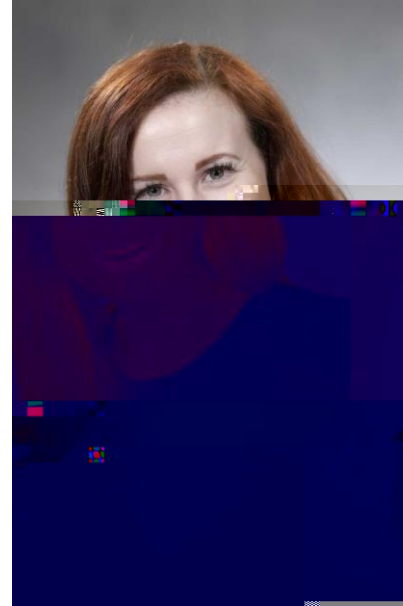
Sharon Tosi Lacey

Chief Historian,
U.S. Census Bureau



Gabby Womack

Reference/Access Librarian,
McQuade Library,
Merrimack College (MA)



Allison DePrey Singleton

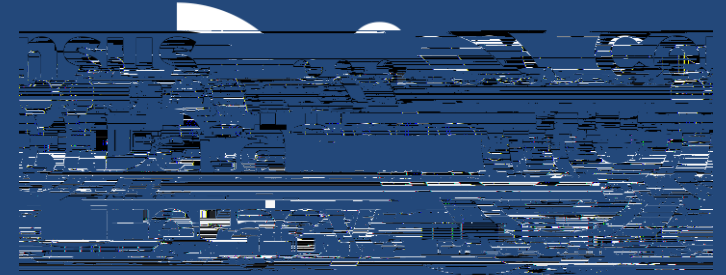
Genealogy Senior Librarian,
Allen County Public Library (IN)



Elizabeth Hodges

Genealogy Senior Librarian,
Allen County Public Library (IN)





<https://www.ala.org/pla/data/census>