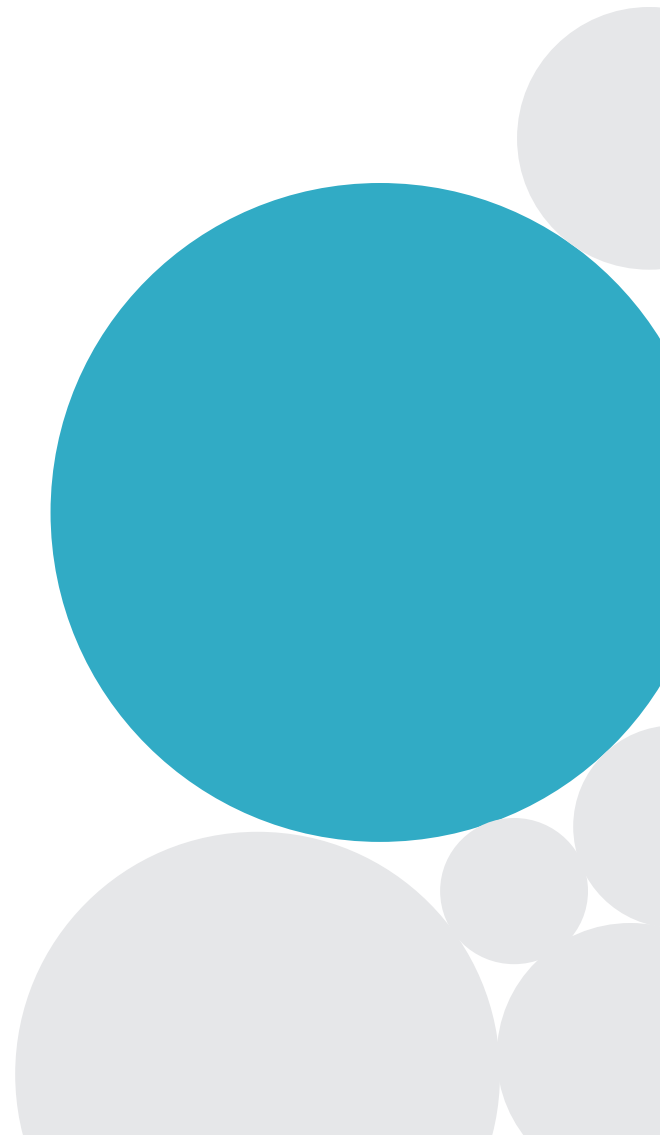




AR

AI

Association





HARTFORD, CONNECTICUT

POP. 125,017



LIBRARIES TRANSFORMING COMMUNITIES

Like all cities, Hartford has its challenges. Hartford's library is ready to step in and help. After years of economic hardship and social divisions in some of its more underserved communities, some residents felt a rift forming between them and



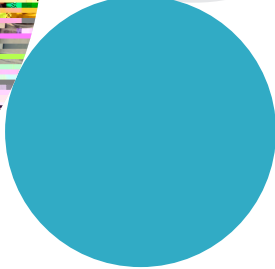
M *a* *h*e *B*land
Former CEO, Hartford Public Library





STILLWATER, OKLAHOMA

POP. 47,186



SCIENCE CAFÉ AT OSU

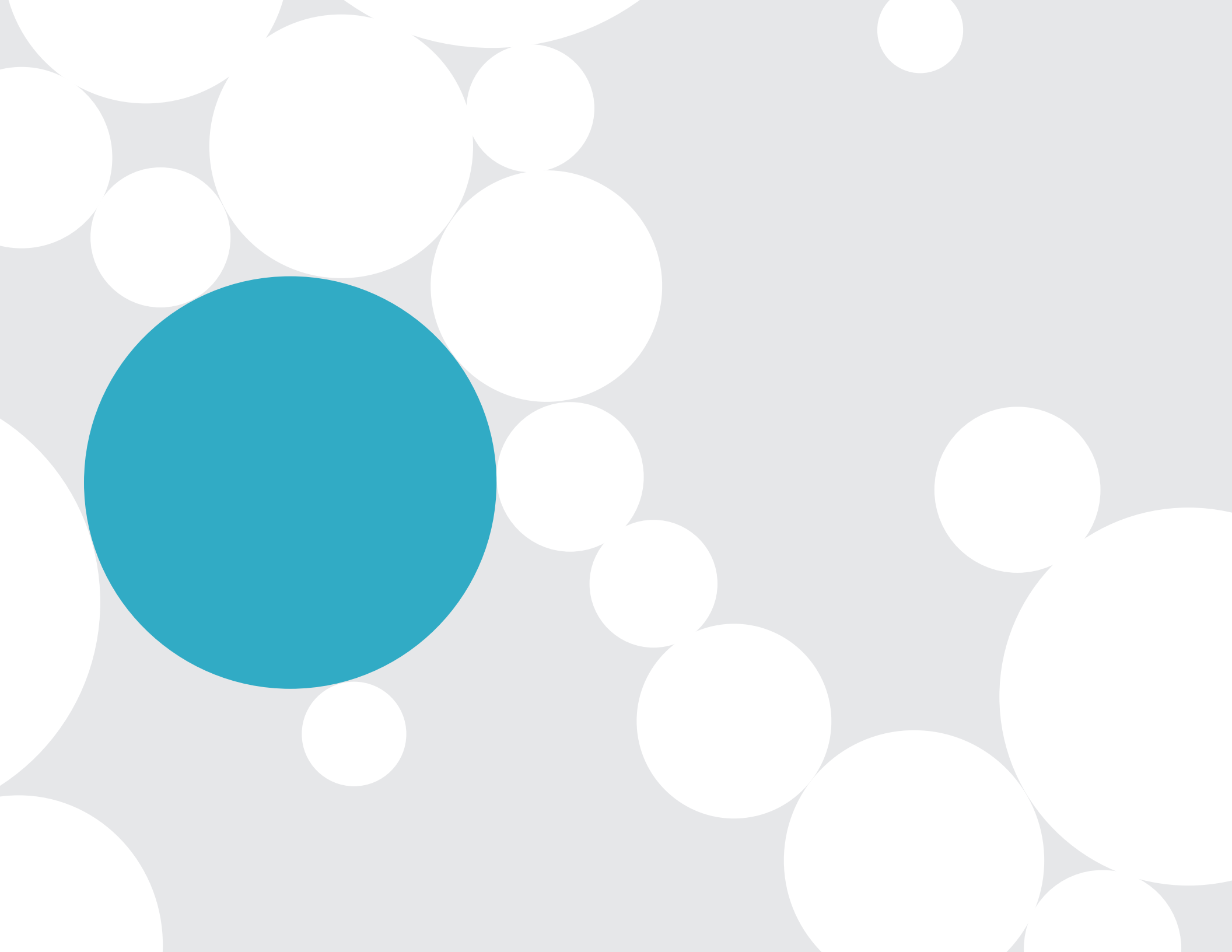
In Oklahoma, where the oil industry is critical to the economy, hydraulic fracturing has left some communities divided. Some residents point to this controversial method of oil extraction, also known as fracking, as the cause for a spike in earthquake activity in recent years, as well as other environmental issues.

Wanting to address these concerns, the Oklahoma State University Library created a series of programs to put not only students, but community members, face-to-face with the experts who could help answer their questions. Over the course of six evenings, Science Café at OSU: Potential Impacts of Oil

and Gas Exploration featured campus professors discussing such topics as Hydraulic Fracturing: Implications for Land, Water and Communities, Drilling Basics, Communities and Housing, and Costs and Benefits. This informative, topical and collaborative Science Cafés program garnered OSU Library ALA's 2015 Excellence in Library Programming Award. Supported by ALA's Cultural Communities Fund, the award recognizes a library that demonstrates excellence by providing programs that have community impact and respond to community needs.

Angela Spo
Stillwater resident

Photos courtesy of Oklahoma State University



HOW DO CONVERSATIONS LIKE THESE GET STARTED IN COMMUNITIES?

PCPAC AND CCF

For the programs featured on the preceding pages, the Public Programs Office relied upon the support and expertise of an experienced group of programming librarians.

(PCPAC) promotes excellence in cultural programming; assists library staff in becoming more effective providers of cultural programming; identifies and disseminates resources for cultural programming; and promotes the Cultural Communities Fund.

More programs are supported every year by the (CCF), an endowment started in 2003 as a challenge grant from the

National Endowment for the Humanities (NEH) to support cultural programming in libraries. Since 2003, funding has grown to more than \$1.9 million, supporting:

- professional development opportunities for libraries that address practical issues related to cultural and community programs
- awards and grants that recognize excellence in library programming
- development and promotion of effective library programming models

To make a contribution—and join the more than 500 librarians, foundations and corporations that

