



AASL's School Libraries Count! annual longitudinal survey is an online survey that is open to all primary and secondary school library programs to participate. The 2010 survey was launched on March 4th and closed on May 17th. The survey was publicized through various professional organizations and events and through word of mouth.



<300 students



AASL has received a high participation rate during the four years this survey has been offered. In 2007 there were 4,571 respondents, 2008, 6,998 respondents, 2009, 5,824 respondents, and in the most recent year, 2010, there were 5,191 respondents.

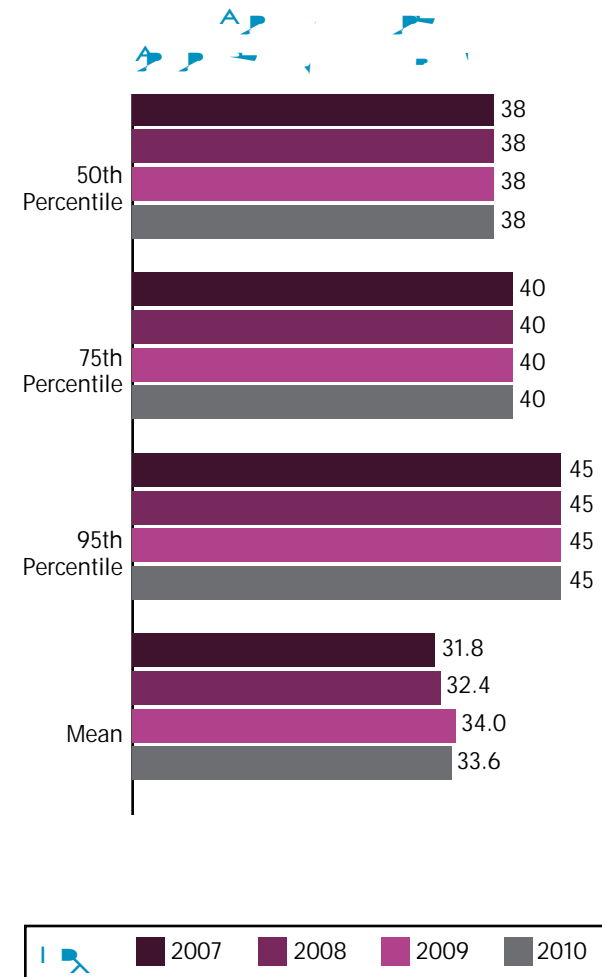
In the current reporting year the respondents were primarily public schools (95%), however, the other demographic areas were quite diverse.



▲▲ K > P P K D Z 1 P P K P

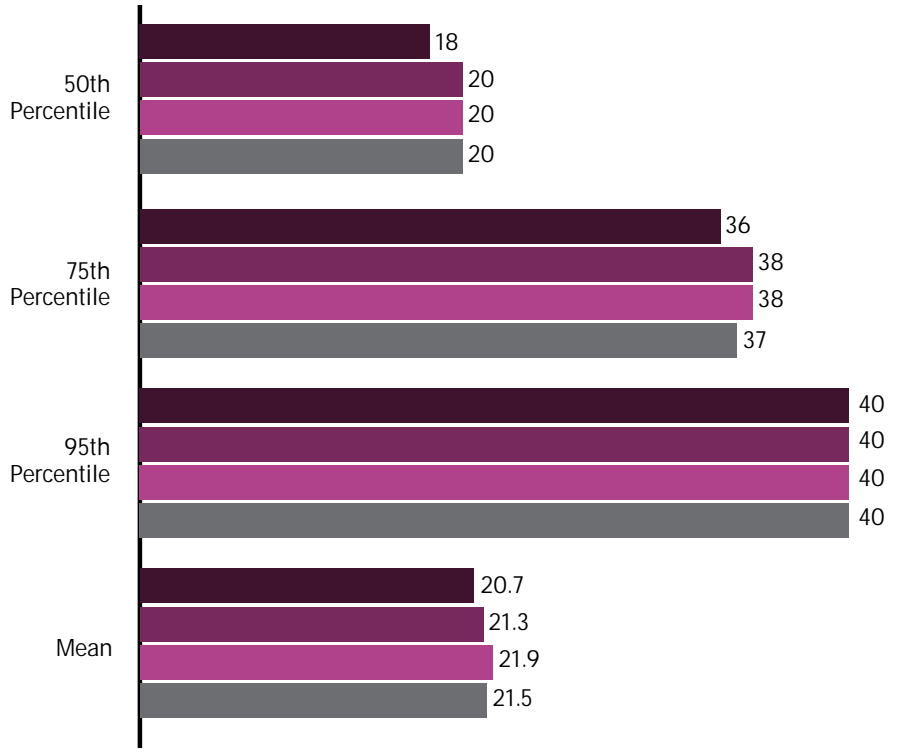
⌋ P K P Z K P P P Z ▲▲ ▼ 1

- School libraries are open fewer hours compared to 2009, while there was no change in overall availability of flexible hours.
- On average survey participants reported a decline of 2.4 hours worked in overall library staff from 2009 to 2010. The decline in hours worked is more evident in the Northeast and Midwest.
- Hours worked by school librarians only, meaning the exclusion of other library staff, in 2010 are reported 0.8 hours higher than in 2009.



DETAILED FINDINGS:





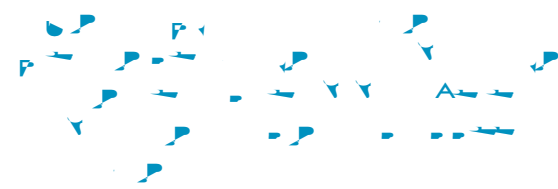
▲ A
A
W
A

▲ P
P
N
P
P
P
N
A
1

- Despite the recent economic downturn, school expenditures on information resources remain comparable to previous years.

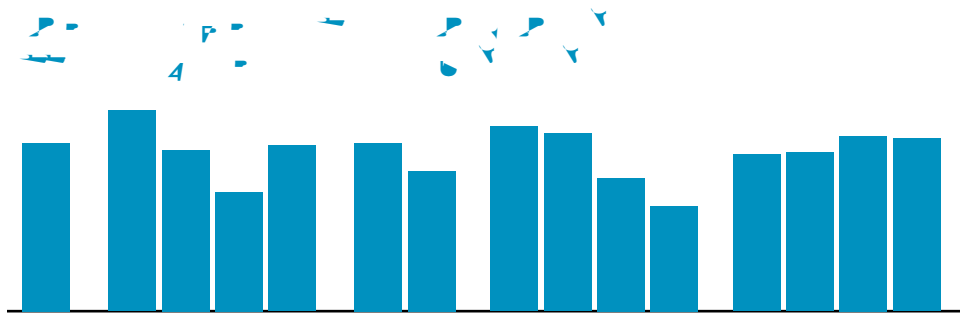
While 2009 figures are slightly higher, the difference is not significant, indicating that expenditures remain consistent to last year. On average, school expenditures on information resources were approximately \$12,260 in 2010 compared to \$13,525 last year.

That said, there are significant decreases in the average amount spent for information resources in areas with high poverty compared to 2009. Average spending in these areas has decreased by approximately 25% (or \$3,557 on average), dropping from \$13,935 in 2009 to \$10,378 in 2010.





In 2007, the American Association of School Librarians (AASL) initiated an



- Nearly one in two schools (49%) report that their libraries have more than five database subscriptions. This trend is stronger among schools with high enrollment, private schools, the Northeast, Midwest and areas with high poverty.



- School library staff, along with technology staff, are the most frequently mentioned sources of providing professional development for teachers in the use of digital content.

Six in ten (61%) say school library staff provide professional development for teachers in the use of digital content.

Nearly as many (57%) report that technology staff would also provide professional development for teachers.

Fewer report relying on district level library/technology staff (49%) or outside vendors (34%).

- The majority of library staff already spend time training teachers on the use of digital resources.

Seven in ten school library staff (71%) spend between one and six hours or more a week training teachers on digital resources, with more than half (54%) spending between 1 and 2 hours.



مؤشرات الأداء

